

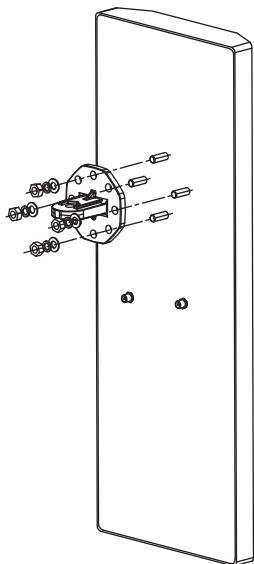


Quick Setup Guide

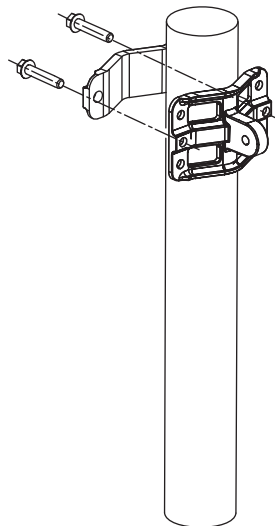
WIS-ANS5818-90

1 Install the antenna

1

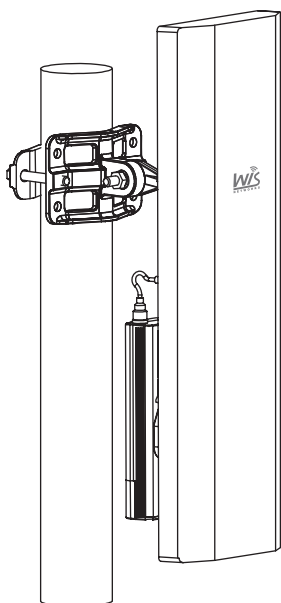


2



- 1 Mount the bracket onto the back of antenna with plain washer, spring washer, and 4*M6 screw nuts.
- 2 Mount another smaller bracket with the groove brackets with 2 M8*60mm screw bolts with plain washer, spring washer on a pole, which should be more than $\Phi 60$ mm.

3

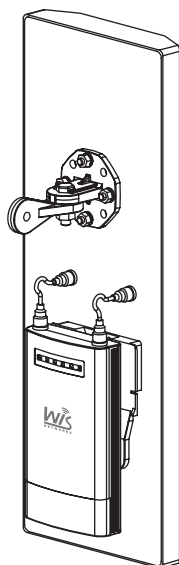


- 3 Bridge the antenna and the pole with the small bridge bracket using 2 M8*40mm bolts and plain washer, spring washer screw nuts. After the tilt alignment, tighten the nuts.

⚠ Attention

The antenna installation and tilt adjust need professional person and skills. Do not install it in illegal places to avoid device damage or violate the local regulatory rules.

2 Connect to radio



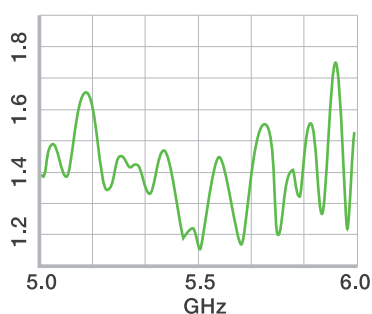
Connect the antenna to the base station, here we use WIS-S5300. With this model, you need 2pcs RP-SMA pigtail to connect the antenna and the radio.

For more information about how to connect the bracket of the radio to the antenna and how to attach the waterproof cover, please refer to our quick setup guide of WIS-S5300.

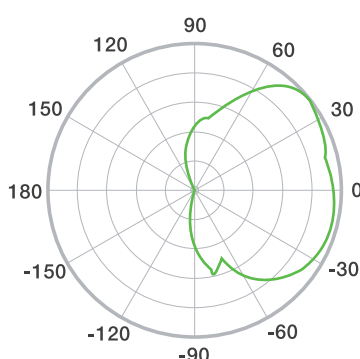
⚠ Attention

You should install the antenna at a proper height and tilt angle to provide target area wireless coverage.

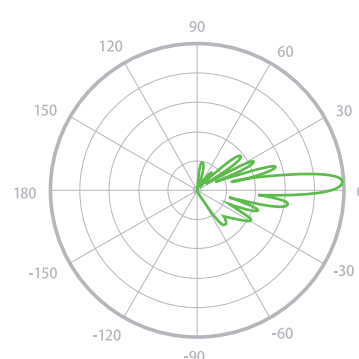
3 Antenna Specification



VSWR



Azimuth



Elevation

SUPPORT

For more guide and help, please go to
<http://www.wisnetworks.com/support>

You can also contact
support@wisnetworks.com
We'll reply you within one weekday.

QUALIFICATION STATUS

QC: PASSED

Warranty Info

Model:	S/N:
Purchase Date:	Distributor:
Customer:	Address:
Contact:	Tel/Mobi:

Terms of Warranty:

You have 1 year warranty service from the date of purchasing Wisnetworks products.

In case of any below condition would not covered by warranty:

1. Damage by transportation and handling.
2. Damage by unauthorized disassembly.
3. Non-compliance of the using environment.
4. Force majeure factors like fire, earth quake, lightning, etc.
5. Human reasons without according to the guide or user manual.
6. Warranty S/N different with device S/N or obliterated